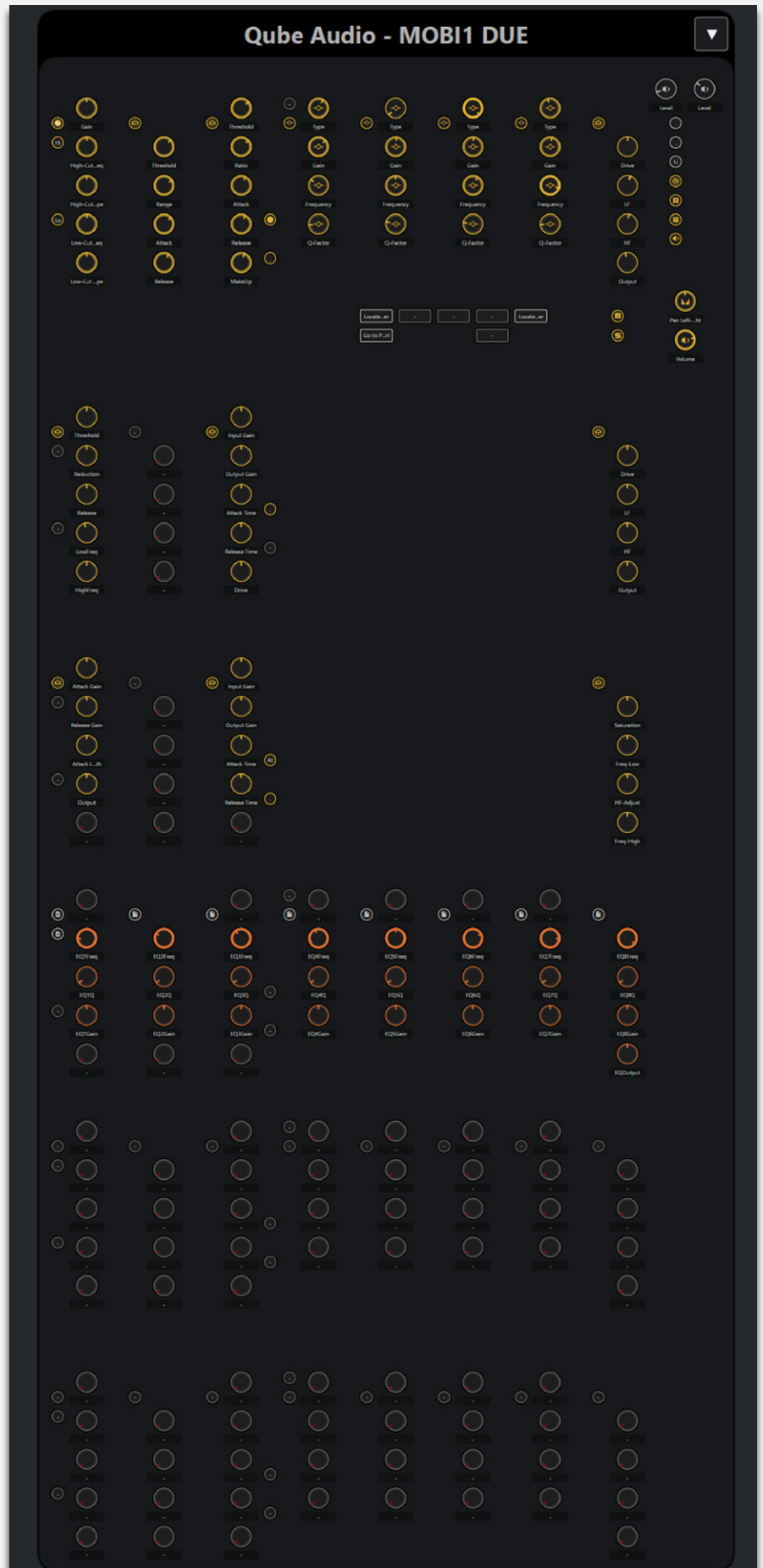


Using the MIDI REMOTE in Cubase 12

With Steinberg's release of Cubase 12, came an extensive range of new tools, which are perfect for customising the Mobi One controller.

In this tutorial, we will look into the new MIDI Remote feature, showing the features of the presets, and how it can be used to create a wide range of custom mappings.

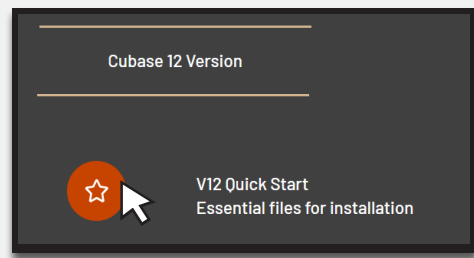


First Steps

- If you haven't already, download the latest update for Cubase 12, as this fixes many issues surrounding the initial releases.

- Ensure the Mobi One is plugged in & ready to use.

- Download & unpack the '**V12 Quick Start Essential files for installation**' from the Qube Audio 'Getting Started' web page. This file is a .ZIP file and will need appropriate unpacking software to release the files.



After unpacking, you will have three new files:

A new Cubase Project File:
'**Qube Audio Mobi One Cubase V12 Getting Started.cpr**'

A new Cubase MIDI Remote file:
'**Qube Audio Mobi One DUE.midiremote**'.

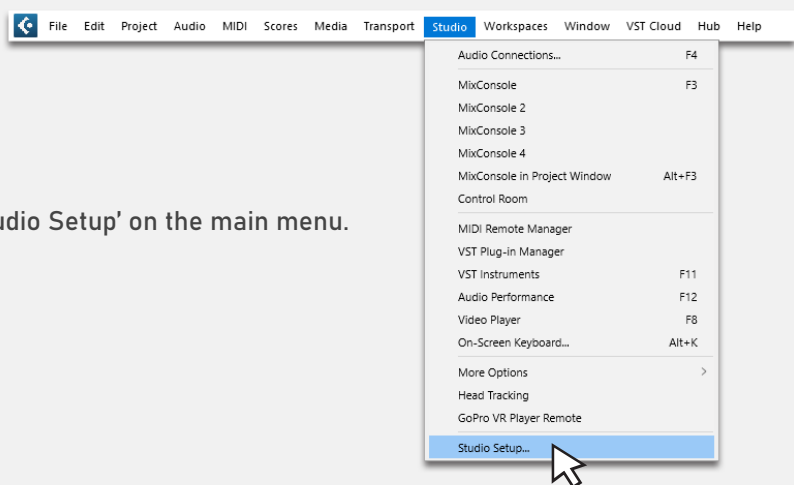
A new Cubase Generic Remote file:
'**Track Controller & Transport**'

- Open Cubase 12.
- Load the newly downloaded '**Qube Audio Mobi One Cubase V12 Getting Started.cpr**' Cubase Project file.

Removing Previous Remote Controllers

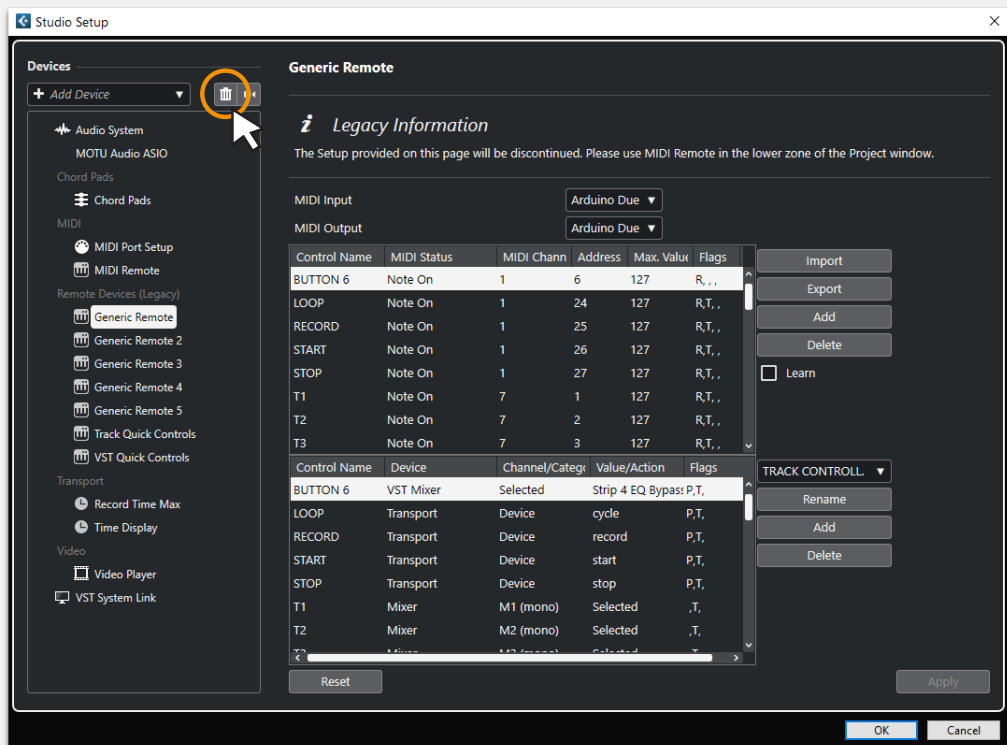
This revised MIDI Remote tool for the Mobi One, is a replacement for all of the previously released Generic Remote files and MIDI Remote files. Please delete all Generic Remote files you have installed in Cubase, and disable the previously installed Track Quick Controls using the following instructions.

If this is the first time you are setting up Cubase / Nuendo for the Mobi One, you can ignore this next section.



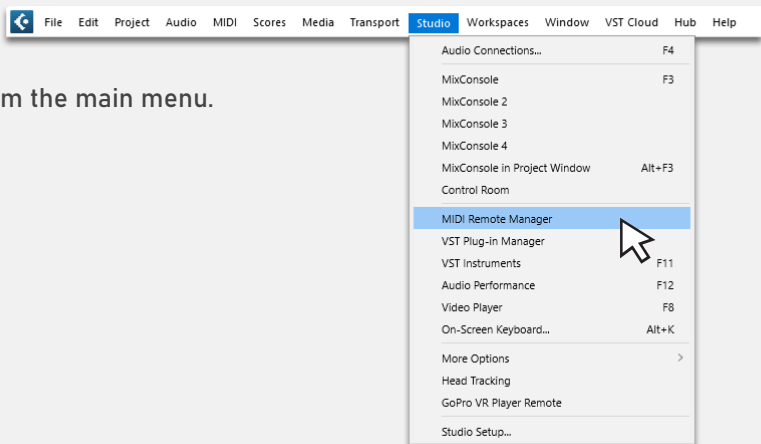
- In Cubase / Nuendo, choose 'Studio / Studio Setup' on the main menu.

- In Studio Setup, remove any Generic Remote scripts you have previously used for the Mobi One, by using the 'delete' icon.
- Delete the 'Track Quick Controls' further down the page, using the same method.



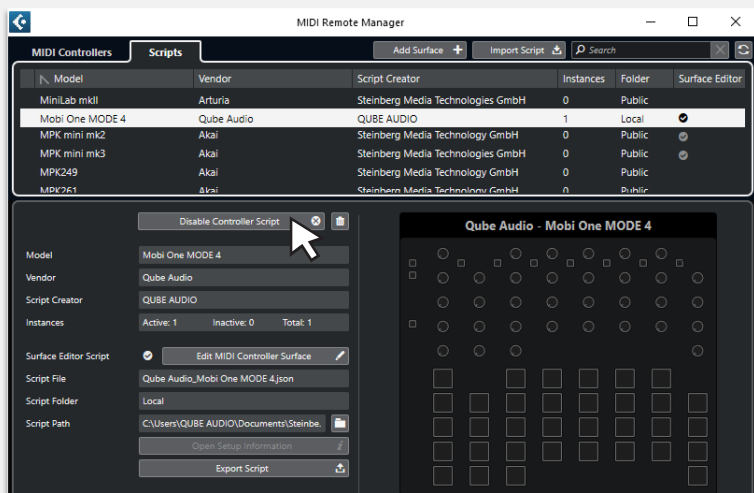
- Press OK, to close the page.

If you have previously installed the '**MODE 4**' MIDI Remote feature for the Mobi One, you will also need to disable its function:



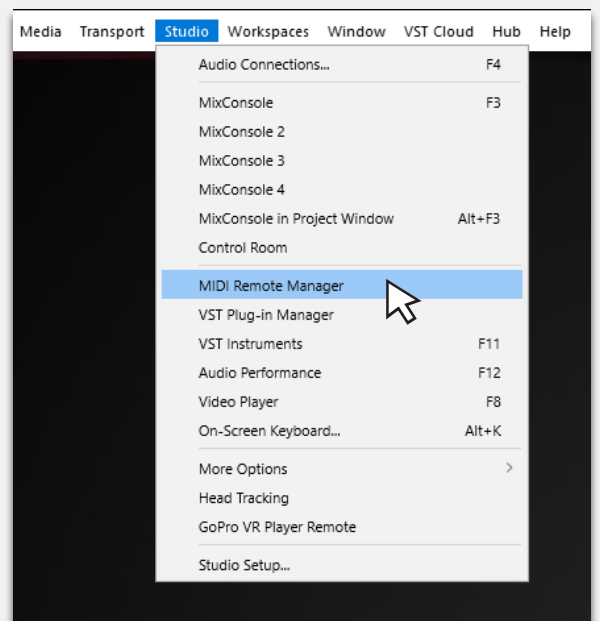
- Choose 'Studio / MIDI Remote Manager' from the main menu.

- In MIDI Remote Manager, select **Mobi One MODE 4**, and click the 'Disable Controller Script' button.

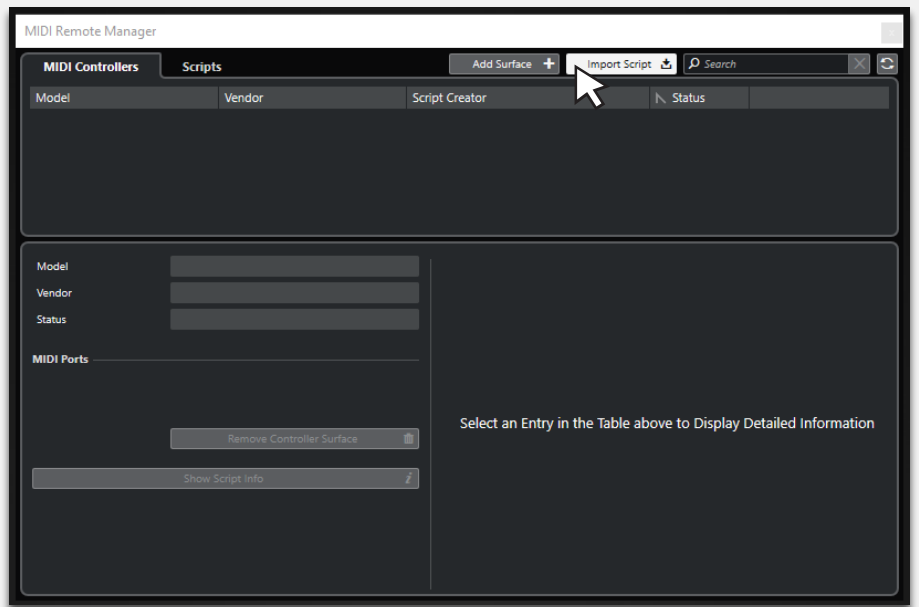


Installing the Mobi One MIDI Remote

- Open the MIDI Remote Manager.



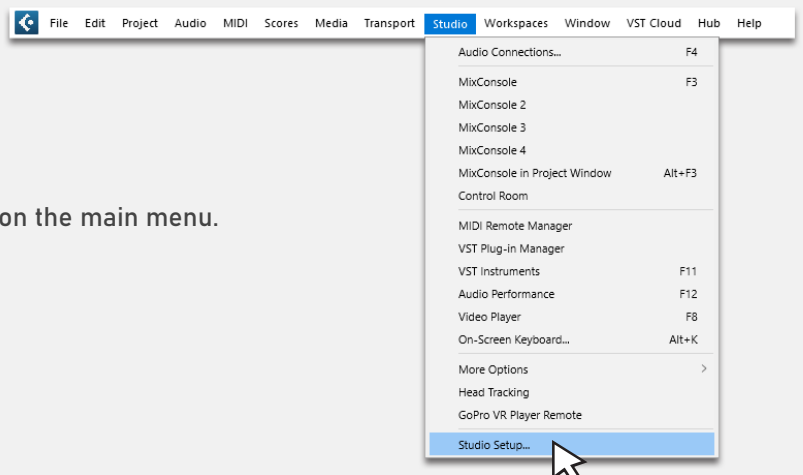
- Click 'Import Script'.



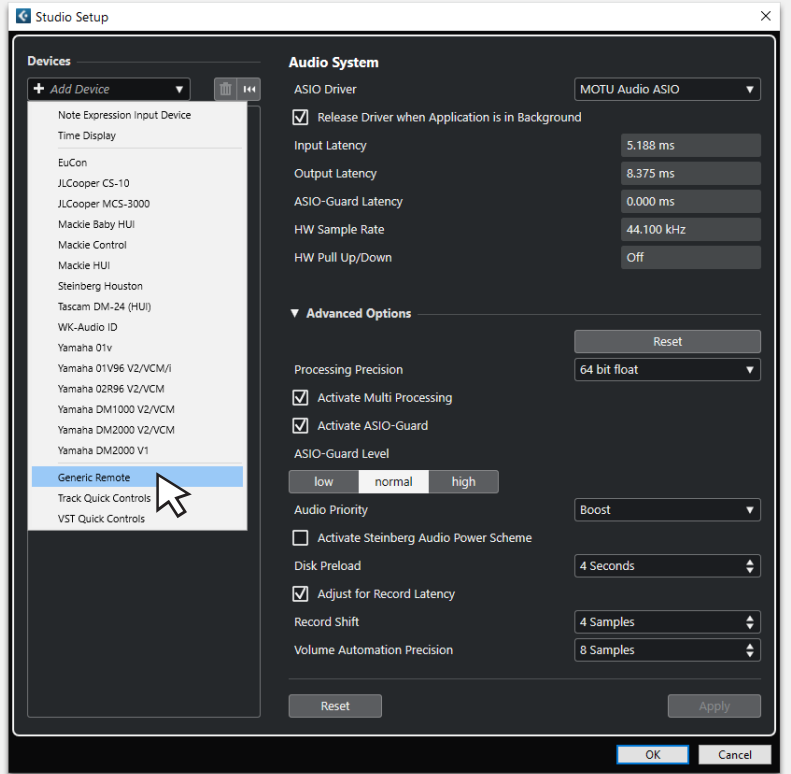
- Navigate to & select the newly downloaded file 'Qube Audio Mobi One DUE.midiremote'.

Because the MIDI Remote is still under development by Steinberg, it is still necessary to install a Generic Remote to control the Track Dial & Transport functions. Updates to the MIDI Remote will be made available, as Steinberg develops the feature further.

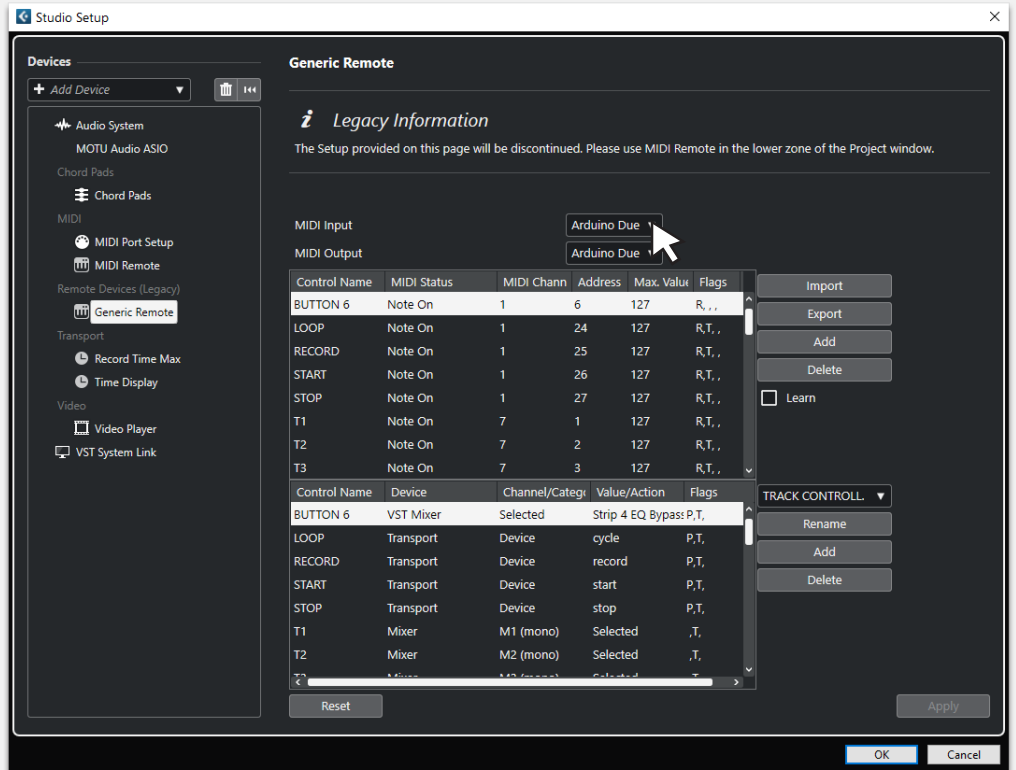
- In Cubase / Nuendo, choose 'Studio / Studio Setup' on the main menu.



- In Studio Setup, add a Device, and choose 'Generic Remote' from the drop down menu.

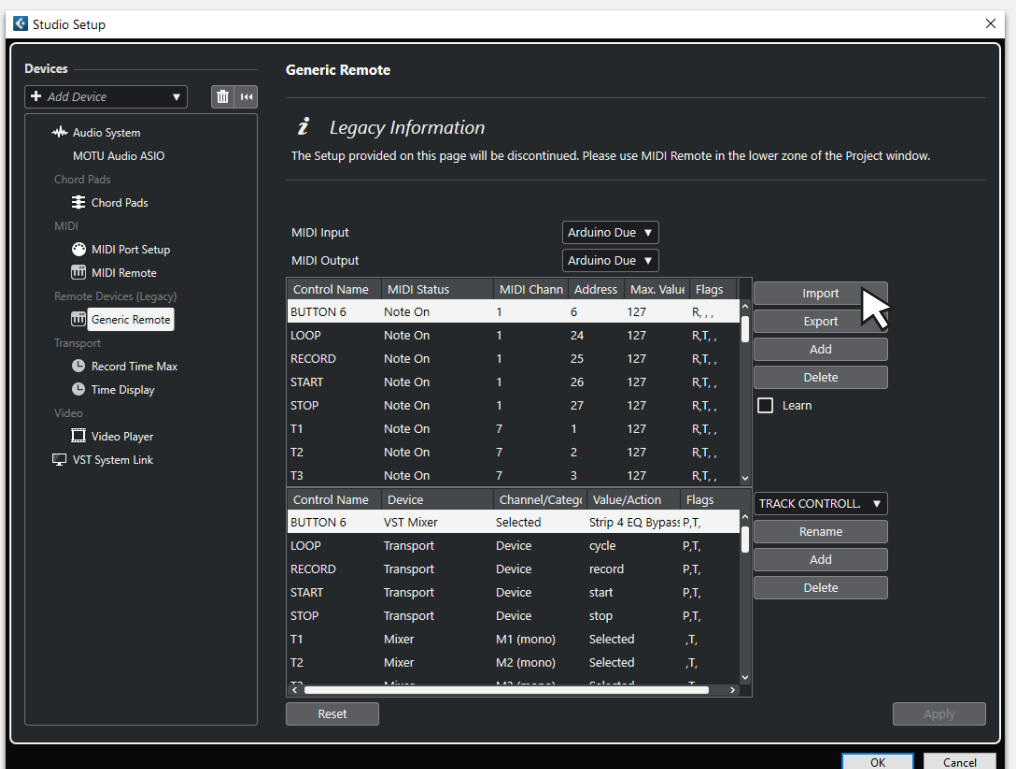


- In the MIDI Input / Output Section, Choose 'Arduino Due' from both drop down menus.



- Click the Import button, Navigate to and choose the newly downloaded 'Track Controller & Transport' Generic remote file.

- Click OK to finalise the changes.

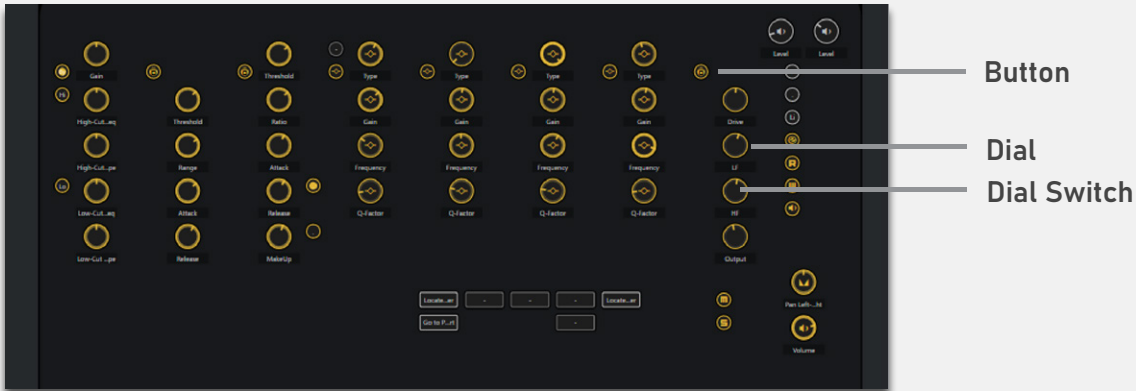


You have now completed the installation of the MIDI Remote. The previous instructions have only to be completed once, when setting up.

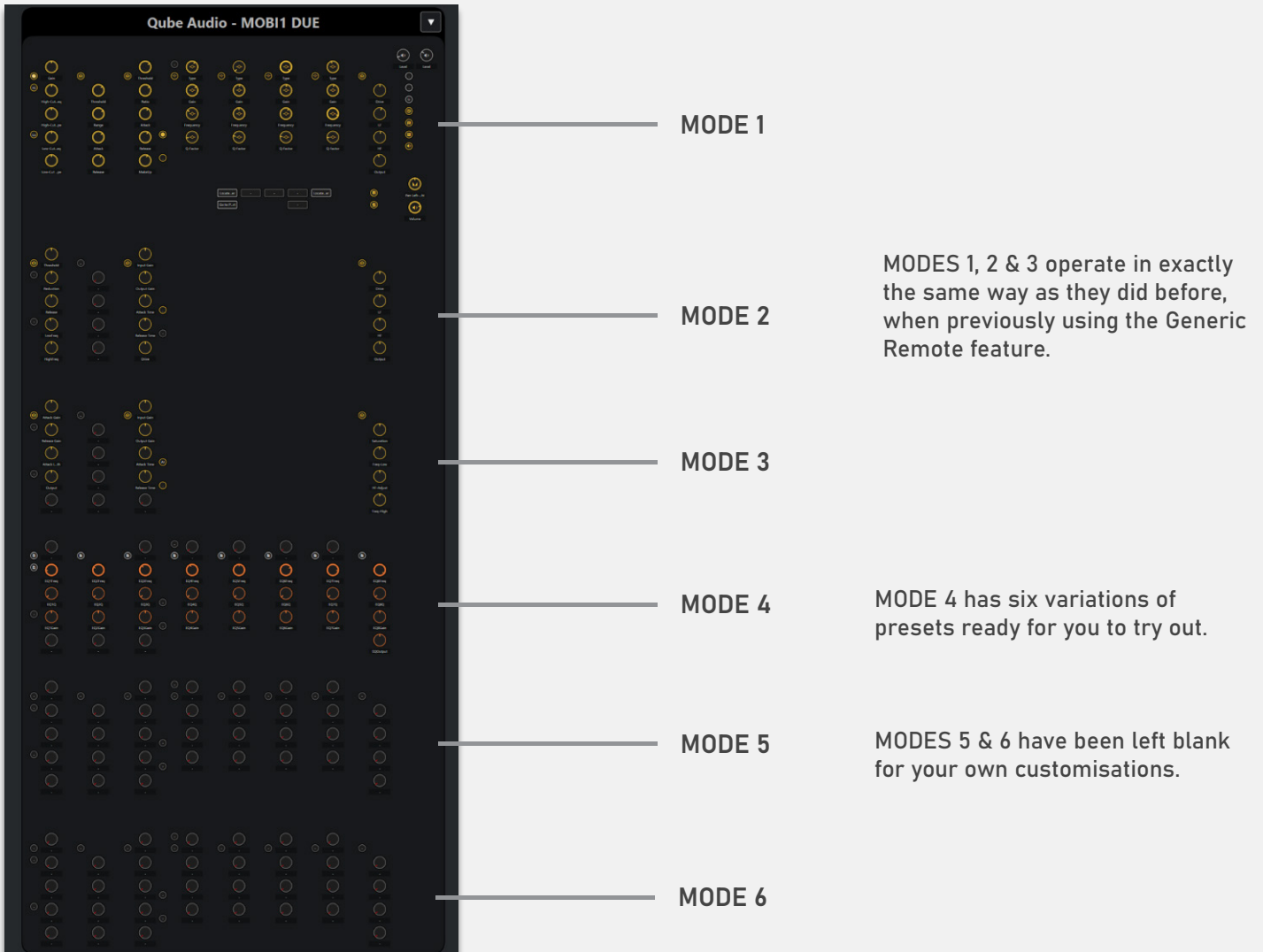
Overview

There are three types of controller outputs on the Mobi One:

- Dial
- Button
- Dial Switch



This latest version of the MIDI Remote features all six MODES of the Mobi One, and can be easily customised for your own personal use.



MODE 4 Pre-sets

In addition to the Default Mapped page, which covers MODE 1, MODE 2, MODE 3 & MODE 4 (frequency2) the new MIDI Remote has six MODE 4 maps detailed below.

Frequency 2



In the following mapping pages, the top row button outputs have been assigned to the 'Mapping Page' functions, giving you a 'Quick Jump' feature to allow you to easily navigate the pre-set pages.



Dynamics



Modulation



Studio EQ



Multi Tap Delay



Delay

*Mappings have been assigned horizontally

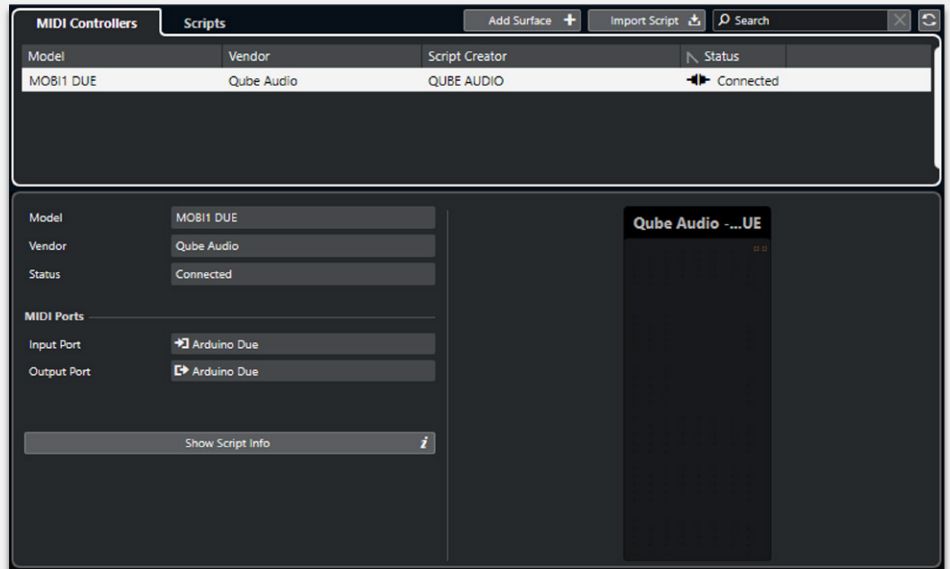


Using the MIDI Remote

There are three new pages within Cubase, designed to give you control of different aspects of the MIDI Remote feature. It is important to know what each page does, & when it is required.

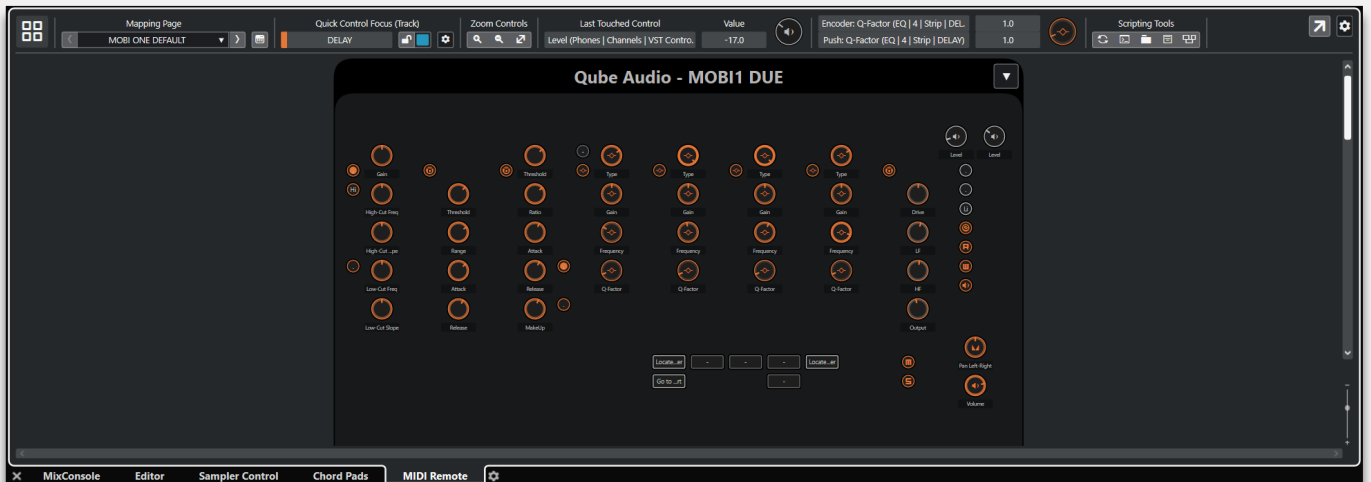
The MIDI Remote Manager :
(Access from: Title bar / Studio / MIDI Remote Manager).

Used for importing & enabling / disabling MIDI Remote Scripts.




The MIDI Remote Overview :
(Access from: Lower Window Zone).

Used primarily to assess the page you have currently selected, and view the mapping functions attached to the page. This page also allows you to select the different mapping pages that you have created.

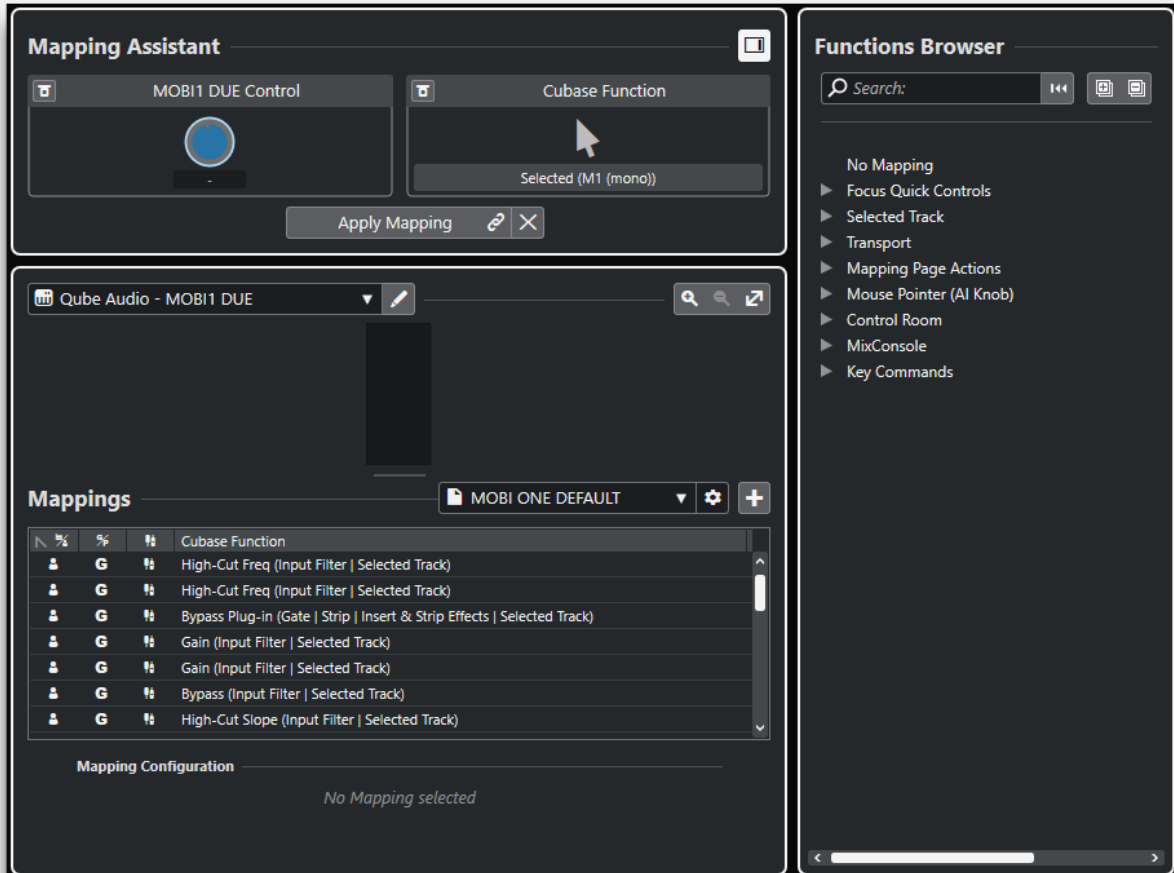


The MIDI Remote Mapping Assistant :

(Access from: Top right of main project page, & top left of the MIDI Remote Overview page). 

This page is used to map each chosen parameter to the Mobi One.

It is important to note, that this page needs to be closed once any changes have been made to it, in order to activate & save the changes. Testing cannot be carried out while the page is open.



Mapping Assistant

MOBI1 DUE Control

Cubase Function

Selected (M1 (mono))

Apply Mapping

Functions Browser

Search:

- No Mapping
- ▶ Focus Quick Controls
- ▶ Selected Track
- ▶ Transport
- ▶ Mapping Page Actions
- ▶ Mouse Pointer (AI Knob)
- ▶ Control Room
- ▶ MixConsole
- ▶ Key Commands

Qube Audio - MOBI1 DUE

Mappings

MOBI ONE DEFAULT

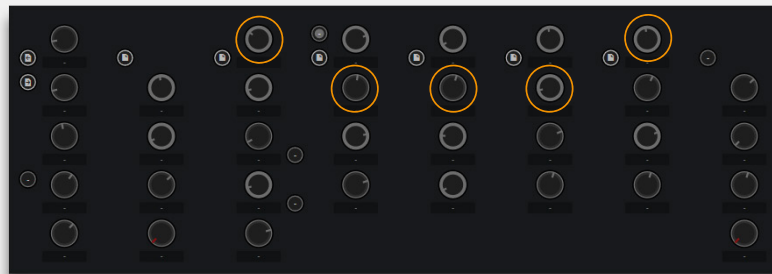
Icon	%	%	ft	Cubase Function
				High-Cut Freq (Input Filter Selected Track)
				High-Cut Freq (Input Filter Selected Track)
				Bypass Plug-in (Gate Strip Insert & Strip Effects Selected Track)
				Gain (Input Filter Selected Track)
				Gain (Input Filter Selected Track)
				Bypass (Input Filter Selected Track)
				High-Cut Slope (Input Filter Selected Track)

Mapping Configuration

No Mapping selected

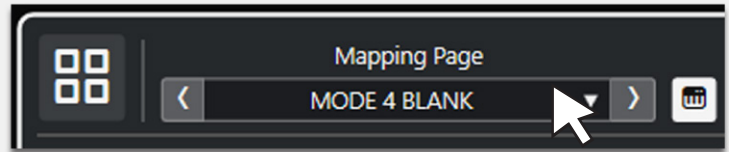
Creating a Custom Template


Let's take a look at how to create a custom template.
Using as an example, the Magneto II, Stock plug-in.



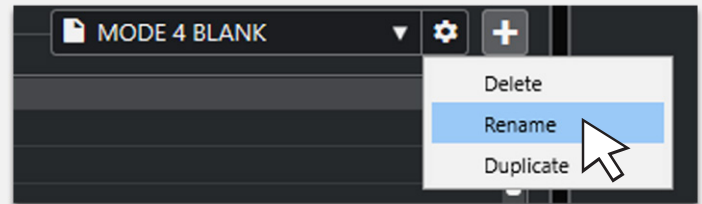
In this example, we will map the Dials & Dial Switches as shown above.

- For this example, select from the mapping page drop-down menu, 'MODE 4 BLANK'.



- Open the Mapping assistant. 

- In the Mapping Assistant page, in the right hand side box, Rename 'MODE 4 BLANK' to 'MODE 4 CUSTOM 1'.

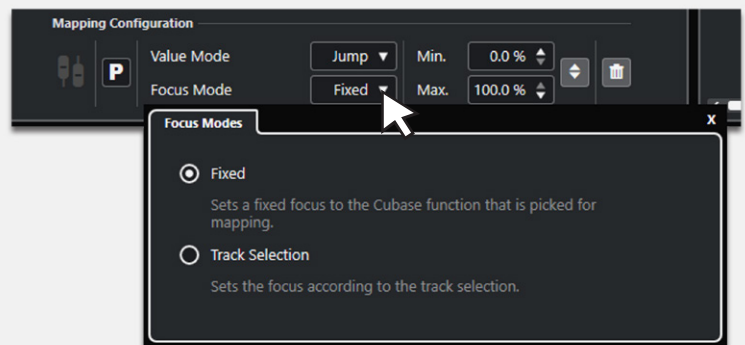


- In the Project Page, choose the track 'Custom 1 Tutorial'.

You can see that we have loaded an instance of Magneto II to the track 'INSERT 1' Slot.

- With the effect plug-in displayed in an adjacent window to the Mapping Assistant page, right click on the effect's furthest left dial.
- Select the 'Pick for MIDI Remote Mapping' icon.
- Turn the appropriate Dial on the Mobi One.
- Click (in Mapping Assistant) the 'Apply Mapping' Button.
- Repeat this for the next four Dials, selecting the appropriate dial for each function.

- When you have completed this, with the Mapping Assistant page still open, at the bottom of the page, locate the 'Focus Mode' section.



- Select the Drop-down box & change the mode from 'Fixed' to 'Track Selection'.
- Repeat these steps for each Mapped Dial.

(Turning the appropriate Dials whilst selecting the 'Selected Track' button allows you to edit each Dial, without entering & leaving each menu system).

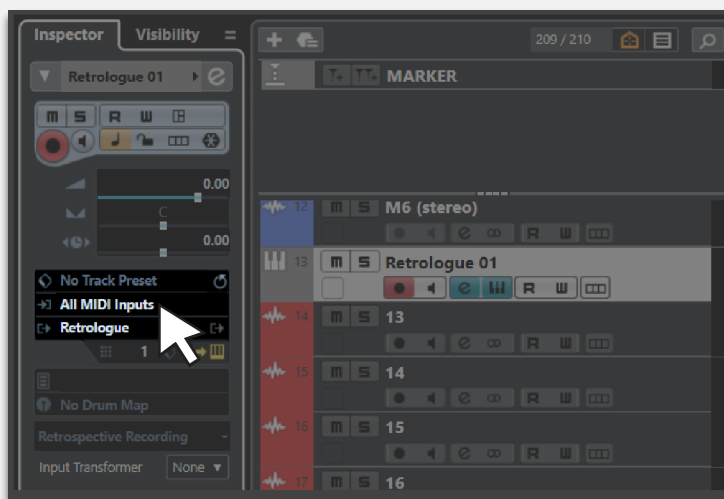
- Close the 'Mapping Assistant' page to save & activate the custom setting.

Using mobi One with Instrument tracks

- When creating Instrument tracks, it is important that the **Input Routing** in the **Track Inspector** is changed from the default value of 'All MIDI Inputs' to either 'Not Connected' or to the name of the controller keyboard applicable to your set up.

It is also important to note, that a pre-set Mode

- will also need to be copied to the track, if you wish to edit the track strip using the Mobi One.



Best Practices

- Have an idea, before starting, where the mappings should be placed.
- Use the 'Mapping Page' drop-down menu, in the Lower Window Zone, to select which page is active. (Use the 'Quick Jump' buttons for easier access).
- When creating your tracks, copy the effect contents from the pre-set tracks, by clicking & dragging the Track Title Bar area in the Mix Console.

Things to Note:

- An effect mapping is allocated to an 'Insert Slot'. To use an effect with the Mobi One, the effect on the track must also be in the same 'Insert Slot' it was mapped to.

We hope that this tutorial has made it clear that the new features in Cubase 12 MIDI Remote are a fantastic & powerful set of tools, that work perfectly with the Mobi One controller & will help provide you with the means to use Cubase your way.